

Login VSI Multimedia Workload

1. Introduction

The Multimedia workload is a type of workload designed to really stress the CPU when using software graphics acceleration. GPU-accelerated computing offloads the most compute-intensive sections of an application to the GPU while the CPU processes the remaining code.

From a user perspective, this means users will experience a dramatic throughput boost in their application usage, enabling them to complete their tasks at a faster rate.

Use this workload to test and benchmark just how much of a boost your users will experience when working with an environment that utilizes a graphics processing unit (GPU) compared to an environment without one.

This modified workload uses the following applications for its GPU/CPU-intensive operations:

- Adobe Acrobat
- Google Chrome
- Google Earth
- Excel
- HTML 5 3D Spinning Balls
- Internet Explorer
- MP3
- MS Outlook
- MS PowerPoint
- MS Word
- Streaming video

2. Requirements

You must have a pre-installed version of Login VSI 4.1.25 or higher.

Please validate a functional VDI/SBC environment by running one of the default workloads, such as the Knowledge worker, included in the Login VSI Professional download before running this modified workload.

You also need an active Internet connection on the Target machine to enable the testing of the Google Earth application.

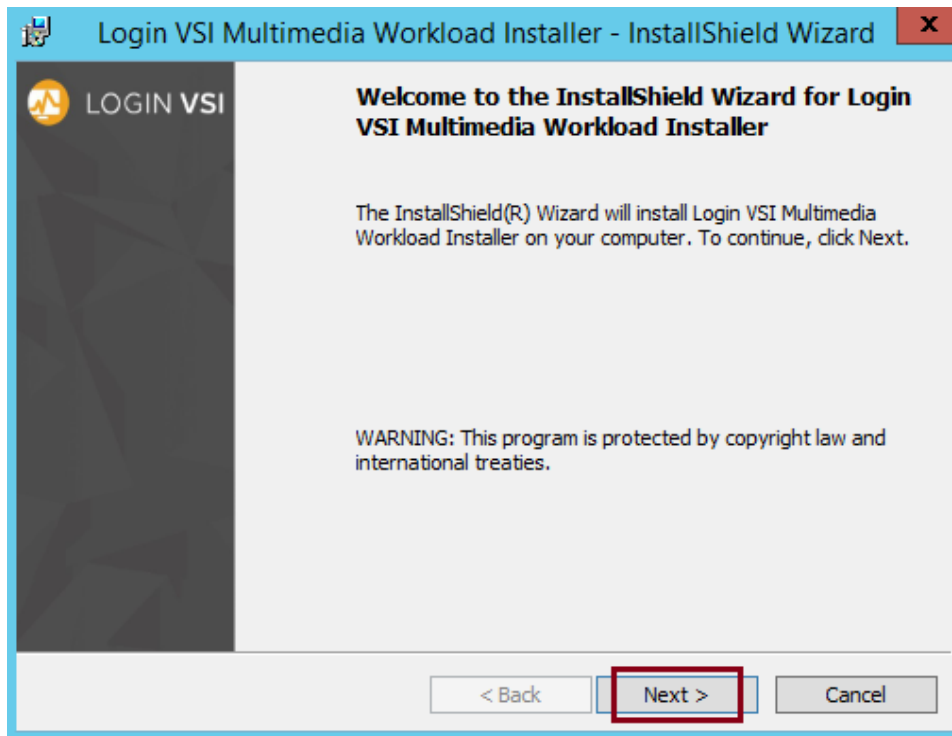
3. Download

Please download the Multimedia Zip file from our website. Once downloaded, please execute the self-extracting archive file to extract the Multimedia workload and Target installer files from the Zip folder.

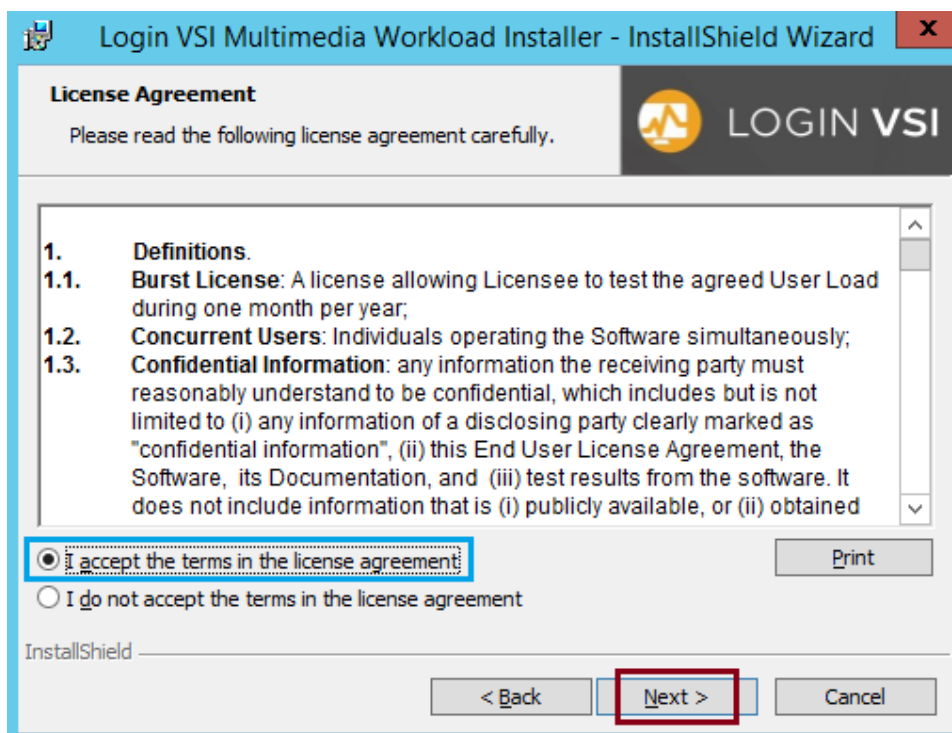
4. Installation

After extracting both files, please run the Login VSI Multimedia Workload Installer executable first.

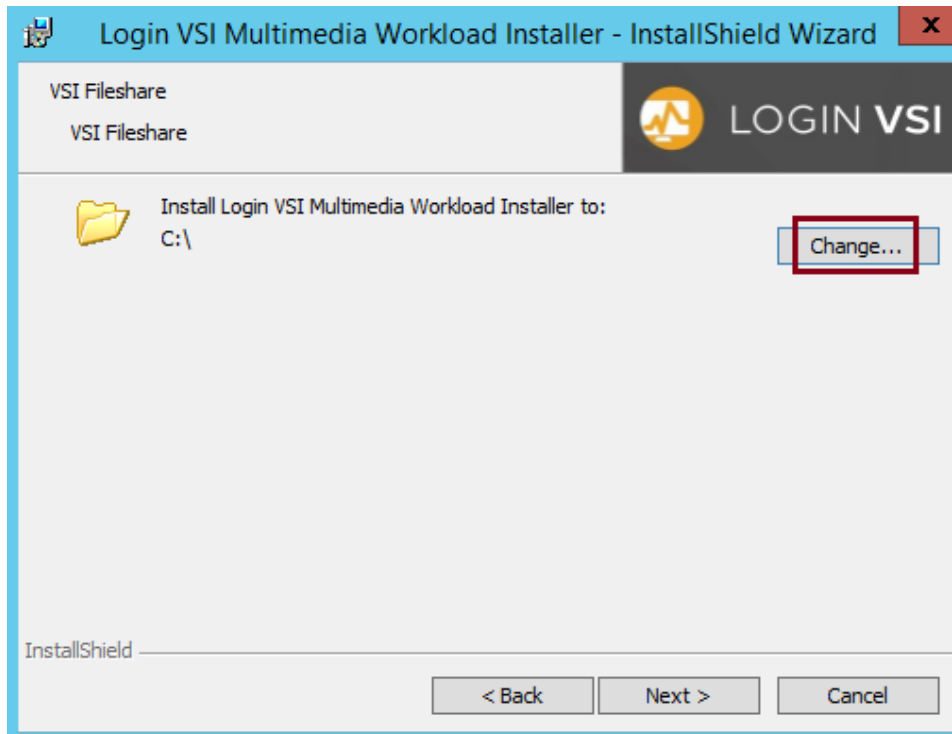
- Double-click the **executable** to open the Multimedia Workload Setup Wizard, then click **Next**



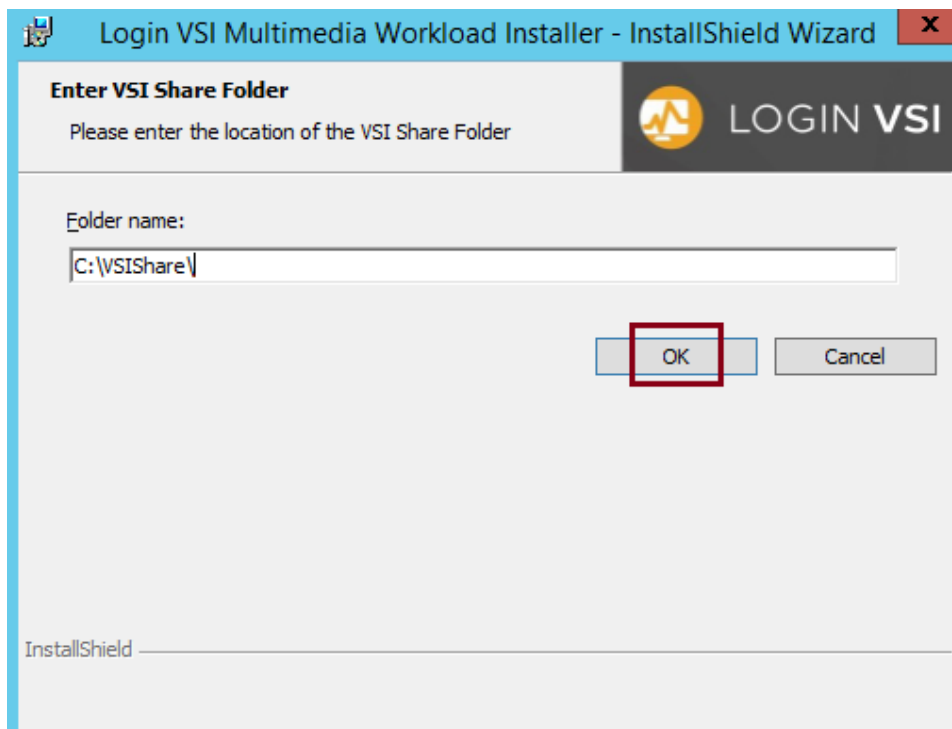
- Now our License Agreement will appear, please accept the terms & conditions by marking the box (you can also print the agreement, if required), then click **Next**



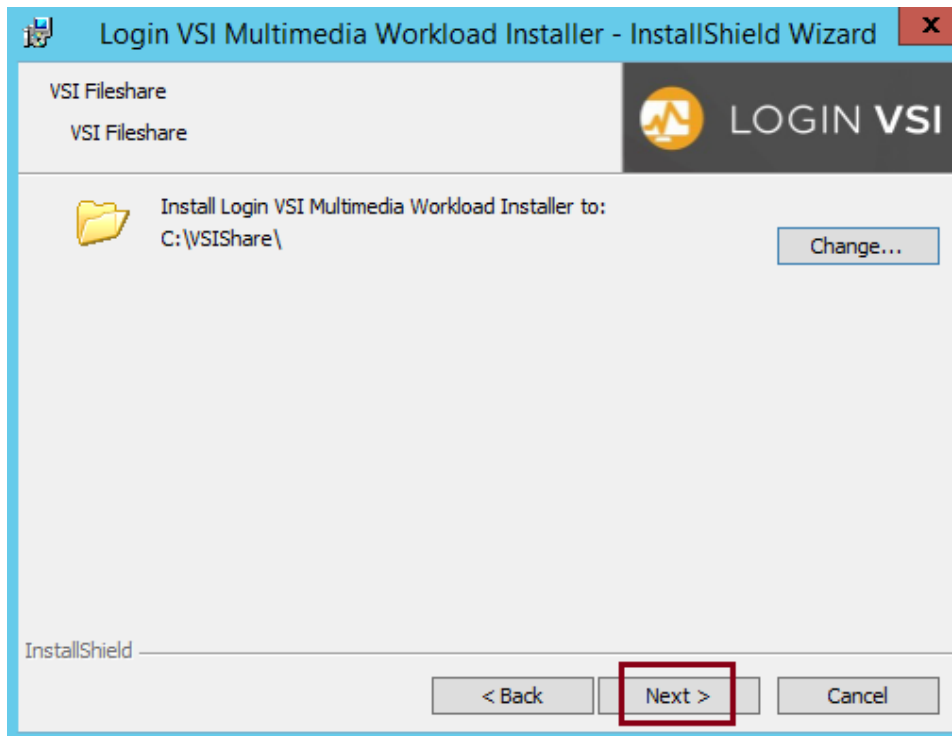
- You must install the Multimedia workload in the VSIShare itself, please click the **Change** button to choose this location



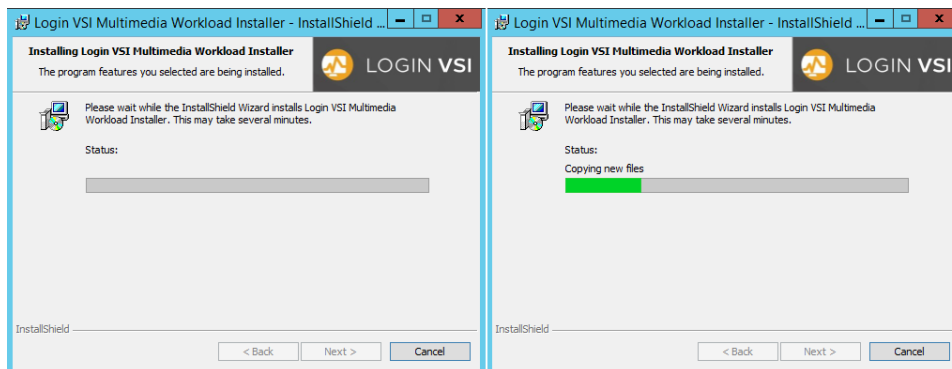
- Please define the location of the VSIShare, i.e. C:\VSIShare\, then click **OK**



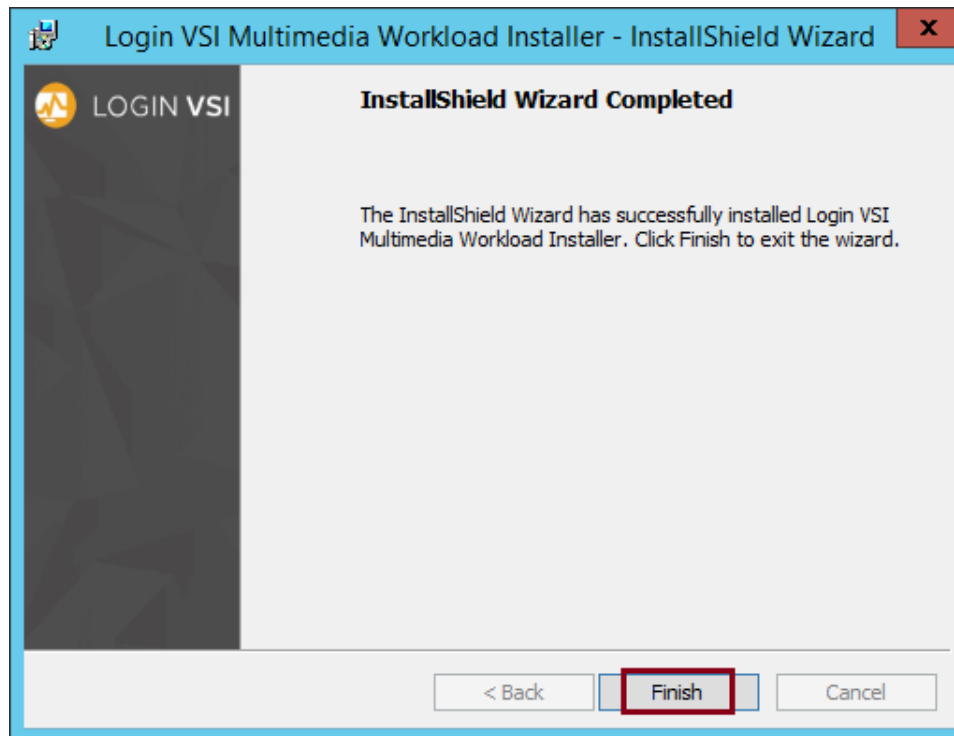
- Then click **Next** to install the workload



- The Wizard will now install the workload and associated media files to their proper location in the VSIShare



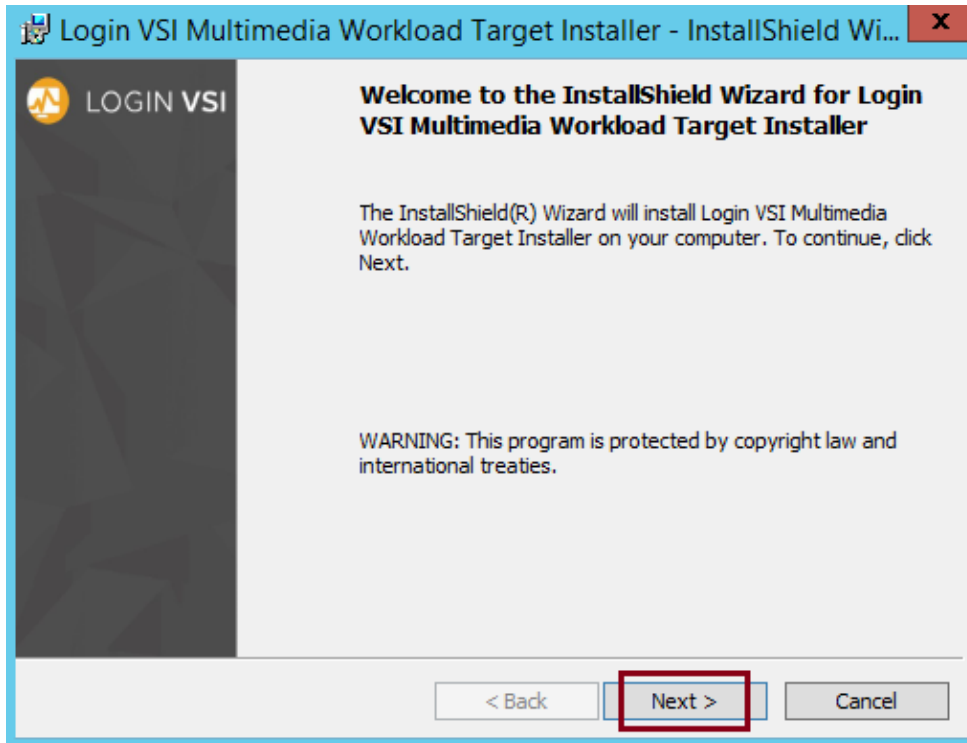
- Once installation is complete, click the **Finish** button to exit the Setup Wizard



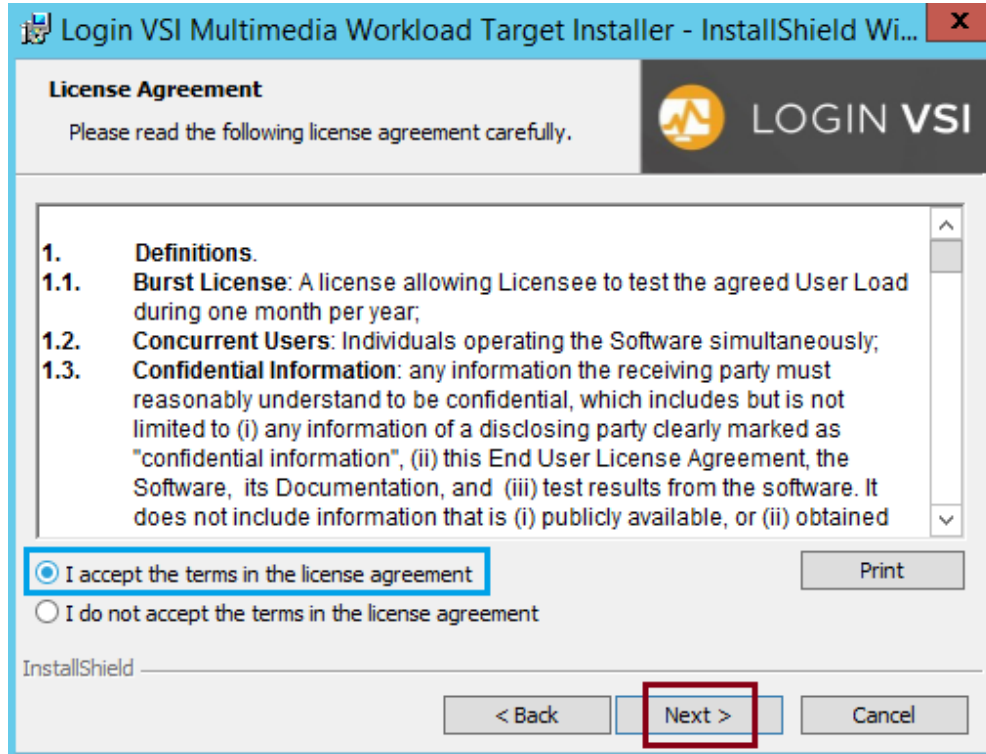
After installation various new files are added to the following folders: VSI Binaries, VSI Content and VSI Websites; while the new Multimedia workload can be found here: VSI Workloads/Custom Workloads.

Now log on to the Target machine and run the **Target** installer, which will install Google Earth and Google Chrome. Double-click the **executable** to open the Target Installer Wizard, then click **Next**.

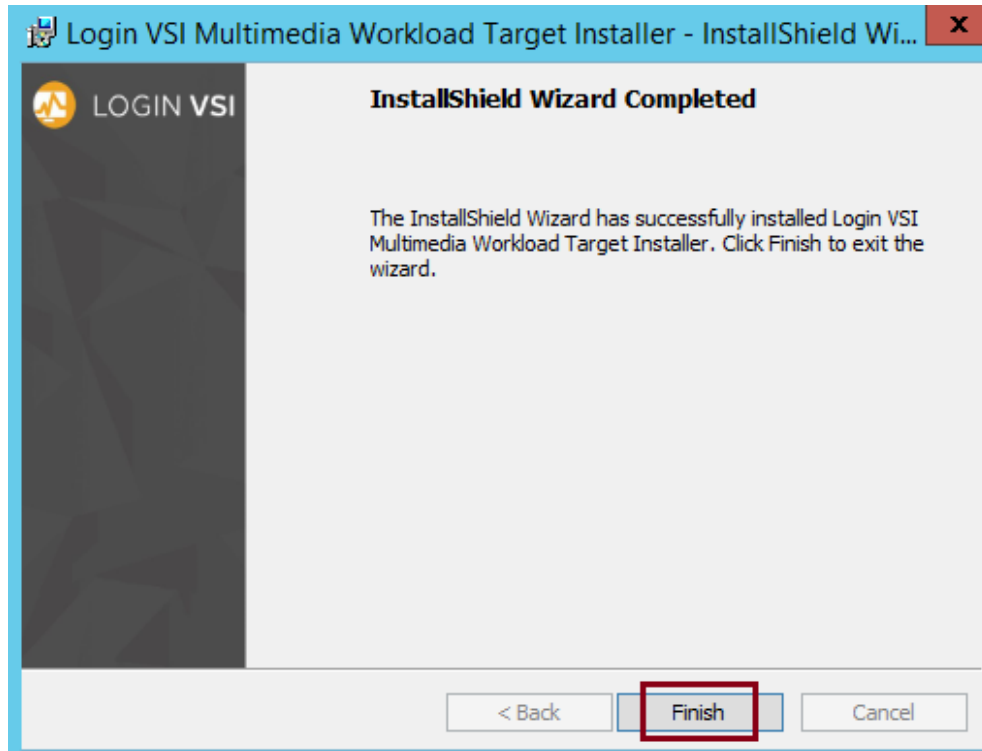
Note: Please be aware that the executable does not work when run locally in the following directory C:\Program Files (x86).



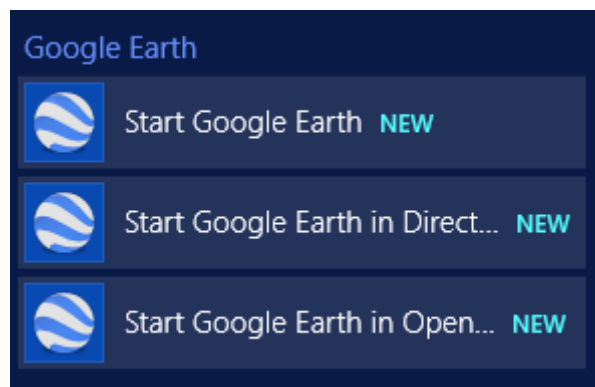
- Please accept the terms & conditions of the license agreement by marking the box (you can also print the agreement, if required), then click **Next** to run the installer



- Once the installation is complete, click the **Finish** button



- You can now find the shortcuts to the Google Earth application in the *Apps* list

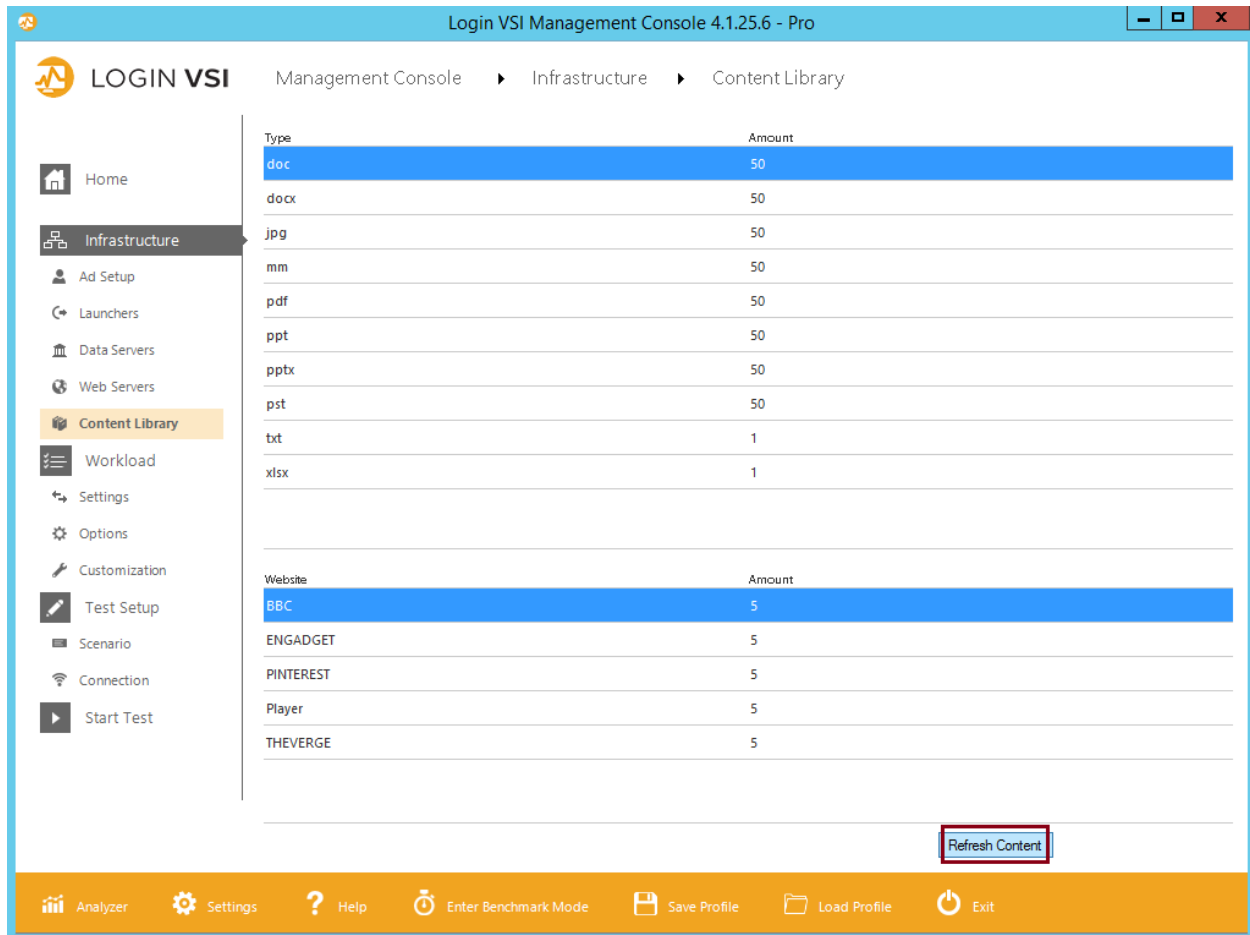


5. Testing

Note: If this is the first time you are using Login VSI, we suggest running a quick test with a native workload, such as the Knowledge Worker, to validate a functional environment.

Before you can start testing, open the MMC and refresh the Content Library. To do this, please go to the **Content Library** tab and click the **Refresh Content** button.

This will update the Content Library with the kml, mp3 and transition files the workload requires to complete its commands.



Management Console > Infrastructure > Content Library

Type	Amount
doc	50
docx	50
jpg	50
mm	50
pdf	50
ppt	50
pptx	50
pst	50
txt	1
xlsx	1

Website	Amount
BBC	5
ENGADGET	5
PINTEREST	5
Player	5
THEVERGE	5

Refresh Content

Analyzer Settings Help Enter Benchmark Mode Save Profile Load Profile Exit

Now navigate to the **Test Setup/Scenario** tab and select the **loggingfx_multimediaworker** from the list of workloads. We recommend running a small-scale test to begin with, e.g. **5 sessions**, and then slowly increasing the number of sessions as you go. Alternatively, you can increase the number of sessions by adding different phases, for example, Phase 1 has 5 sessions, Phase 2 has 10 sessions, etc. For more information, please see our [online documentation on Phases](#).

Login VSI Management Console 4.1.25.6 - Pro

Management Console > Test Setup > Scenario

Mode Full desktop Published applications

Workload

- knowledgeworker * 2vCPU
- officeworker * 1vCPU
- powerworker *
- taskworker *
- loginfx_multimediaworker
- Workload mashup

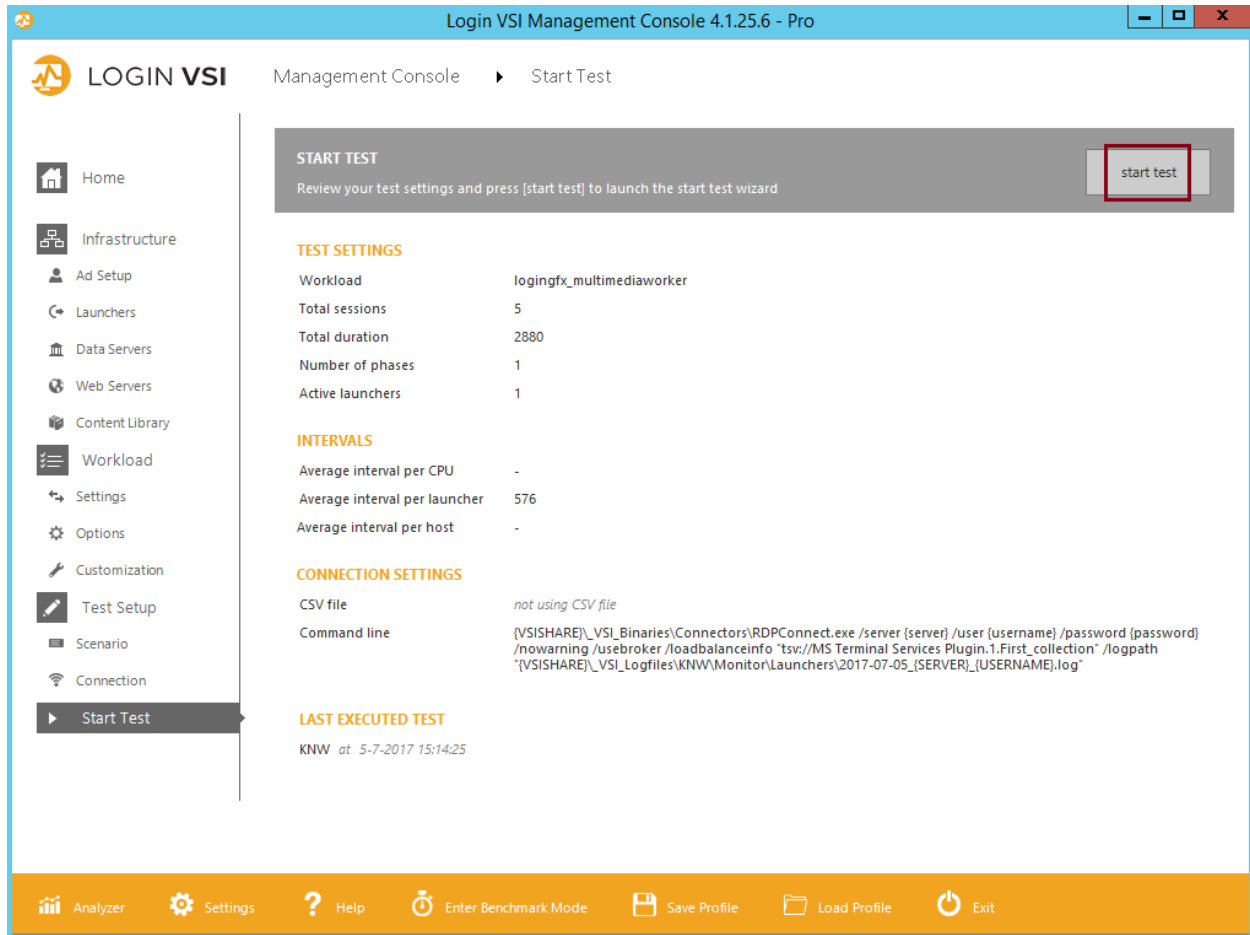
Workload mashup

Name	Sessions	Launch Window	Overall Logon Rate	Total Session per Launcher	Launcher Logon Rate
Phase 1	5	2880	576	5	576
Totals:		5	2880		

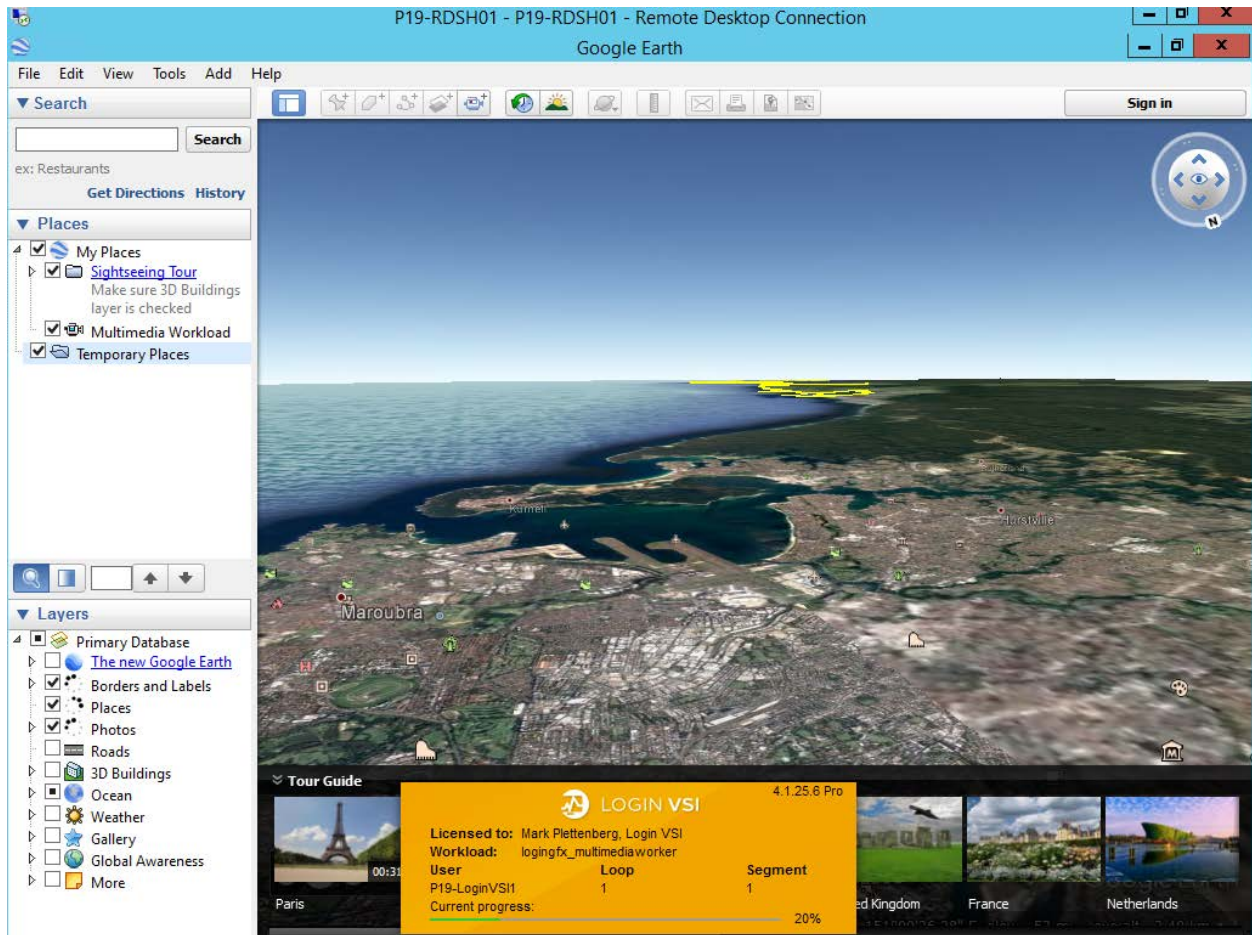
basephase information move up move down add phase insert phase delete phase

Analyzer Settings Help Enter Benchmark Mode Save Profile Load Profile Exit

Now go to the **Start Test** tab and click the **start test** button. If you need help with the *Start Test Wizard*, please see the [Start Testing](#) section of our online documentation.

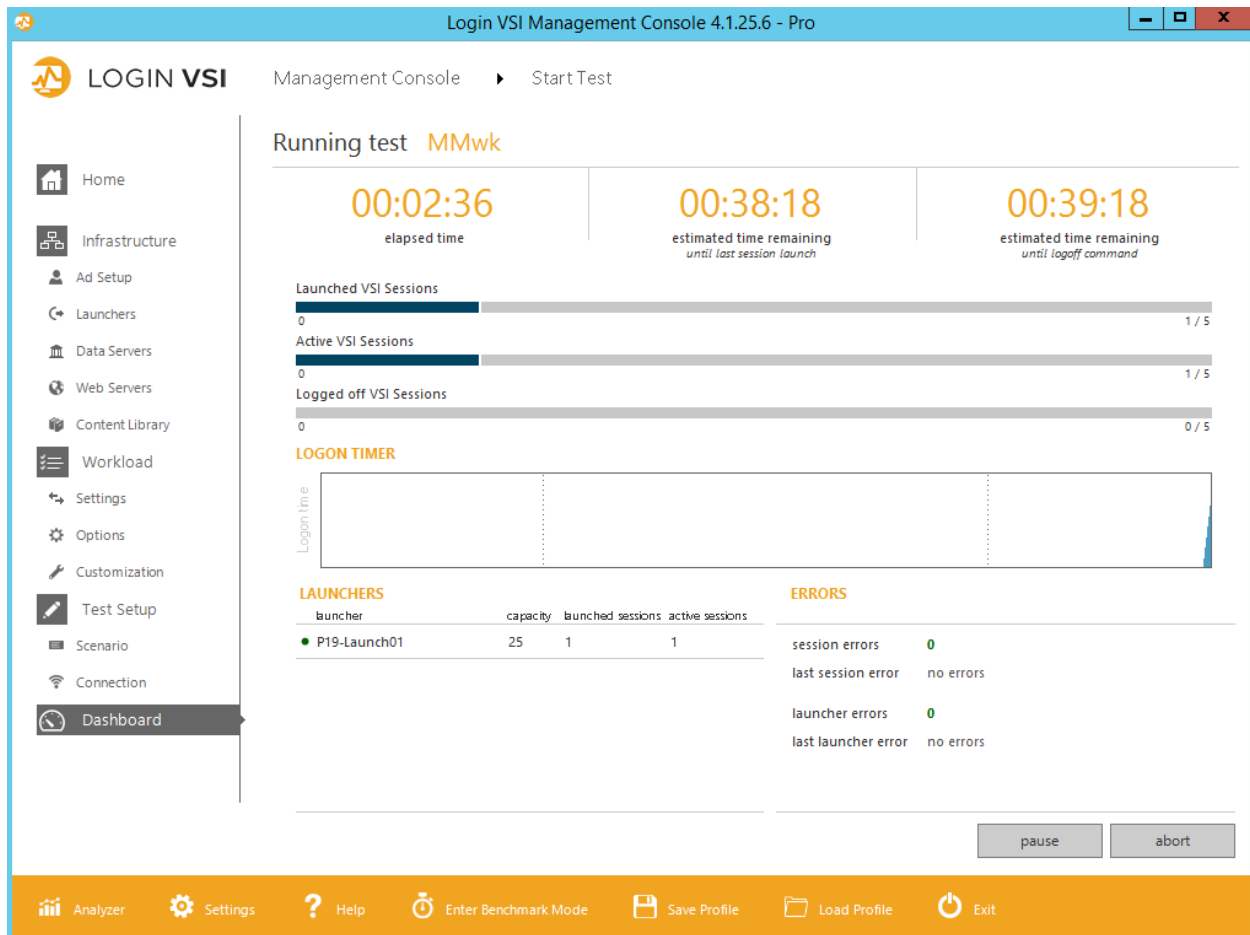


Once you activate a test, the launcher will log on to the Target machine and start executing the commands in the workload (see the example below).



You can monitor the performance of the test via the Login VSI Management Console Dashboard. Here you can see the amount of launched and active sessions, as well as how many have logged off. You can also see if any errors occurred during each session (or per launcher).

Important: Please be aware that each session will only log off once it has finished running all the segments within the workload (4 segments in total).



If you do experience any problems during testing, please check out our [Knowledge Base](#) articles.

6. Results Analysis

Once the test is complete, you can view the results within the Login VSI Analyzer. To access the results, simply click **Analyzer** in the bottom left corner of the MMC (you can also find the application in the VSIShare).

It is important to understand the impact on a system both with and without a GPU, therefore, we recommend gathering performance data on different levels, like host GPU and CPU utilization, as well as other host data, such as memory usage and application start times. However, as there is no GPU graph available within the Login VSI Analyzer, you must capture the GPU utilization data yourself (you can then [import it as external data](#)). If you are not familiar with this procedure, then you can use our professional services to help walk you through it. For more information on our professional services, please contact your Account Manager.

The VSImax v4 graph is the main tab of the Analyzer. VSImax is Login VSI's easy-to-understand measurement of how many users can run in an environment before the performance reaches unacceptable levels. It shows the amount of sessions that can be active on a system before the system is saturated, which gives you an indication of the scalability of the environment (higher is better).

You can also find a summary of the test along with other graphs with specific details, such as VSImax v4 Detailed, CPU, UMEM and App Start (see the examples below). For more information on these graphs (and the others), please see the [Analyzing Results](#) section.

