

Login Enterprise Platform Features

From our core functionality to add-ons and pre-built solutions, Login Enterprise has the power to transform how you manage the performance, cost, and capacity of virtual desktops and applications.

Explore what Makes Login Enterprise Different

The Login Enterprise Platform includes core functionality, add-ons and pre-built capabilities that enable a different approach to tackling modern virtual desktop and application challenges. Together they enable end-user computing (EUC) teams to:

- **Proactively Monitor** – Catch issues before users notice by continuously monitoring performance—all day, across all locations—without needing agents or users to be present.
- **Optimize Costs** – Spend wisely without sacrificing performance and gain constant visibility into the costs related to your environments – in the cloud, hybrid, or on-premises.
- **Manage Capacity** - Eliminate guesswork and know exactly what your environment can handle while maintaining peak performance.

Zero-Impact to Your Endpoints

Many tools typically monitor using agents installed on digital workspaces. The trouble is that those agents become part of the ecosystem, potentially creating problems by consuming precious resources or conflicting with other components.

With the Login Enterprise platform, virtual users mimic human interaction at any time with a zero-agent footprint, allowing you to monitor regardless of whether the actual user is present. You still gain insights into the actual user experience, but you never have to wait for end users to alert you of a problem. Let our virtual users do the work for you.

Real-Life User Workloads

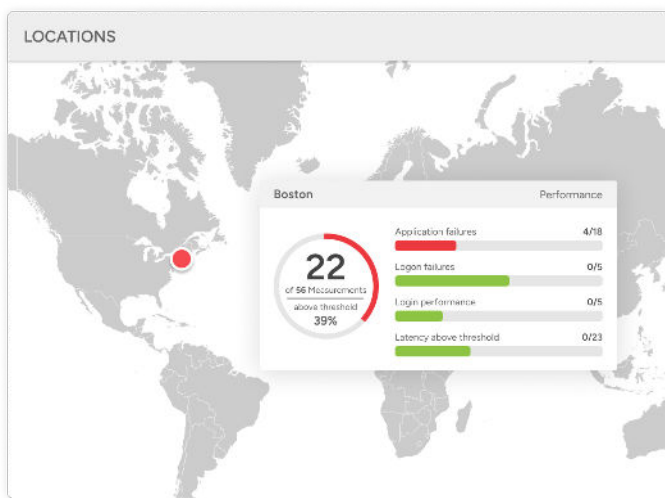
Real-user behavior is replicated through real-life workloads, such as logging into an application, searching for data, clicking links, opening a report, saving a file, and more. To get you up and running, out-of-the-box workloads support core Office 365 products.

Workloads can be tailored to reflect different worker personas. For example, creating a workload for call center agents, CAD designers, or specific healthcare departments. You can automatically create workflows using our Application X-Ray utility or create advanced workflows with conditional logic statements for more resiliency and flexibility. As your workloads become more specific, your end-user experience monitoring becomes more precise.

Geographically Independent

Login Enterprise isn't limited to specific geographical locations. Our virtual users can be positioned to run at various locations – whether at headquarters, branch locations, or different cloud provider locations. This allows you to incorporate outside variables, such as network latency, when monitoring performance or sizing capacity.

You can even customize and group your digital workspaces and specific applications by different departments, locations, and worker personas to better manage your virtual desktop real estate.



Login Enterprise can be used at geographically dispersed locations, such as headquarters, branch offices or different cloud provider locations.

Flexible Scheduling

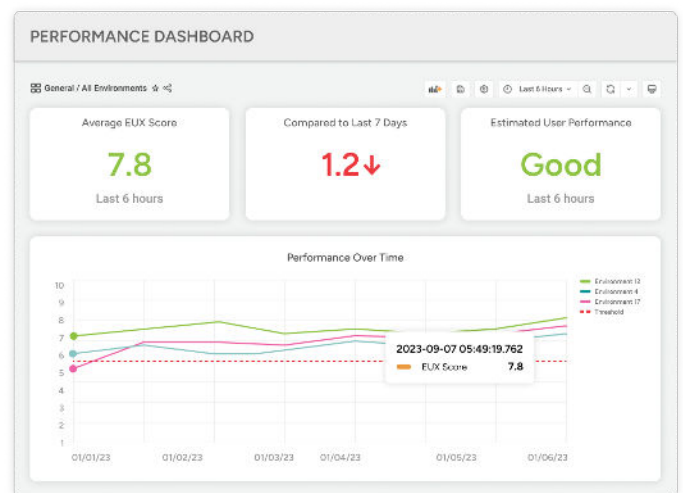
Login Enterprise makes monitoring as flexible and turnkey as possible. Schedule once daily, weekly, or continuously for 24x7x365 coverage. You can adjust what workloads or workload components run, and sessions can be scaled based on small or large user populations.

Scheduling flexibility helps you adapt to different needs, such as critical availability monitoring before workers arrive, in-depth validation after major changes, or detailed comparisons before and after a migration to ensure consistent experiences. Better yet, you can re-use the same workload components and bypass recreating the wheel.

Industry Benchmarks

Users' perspective on "performance" is entirely subjective. You could ask ten users on the same digital workspace how satisfied they were with the experience and receive ten different answers. Login Enterprise Platform eliminates guesswork and subjectivity by employing a scientific approach that provides consistent measurements with two leading benchmarks.

The EUX Score provides a numeric benchmark from 1 to 10 that evaluates various characteristics to determine an individual experience. VSImax uses enhanced algorithms and EUX Score inputs to determine the true maximum user density for DaaS, VDI, and SBC environments. When used together, they become valuable markers to create comparisons that make technology evaluations, change impact decisions, and identify the workspace's overall degradation objective and quantifiable.



Login Enterprise includes the EUX Score to benchmark your end-user experiences.

In-Depth Analysis and Notifications

Some reporting tools provide volumes of technical information that are hard to act on. Further, IT teams need reporting for management and senior leadership teams that must be manually distilled and translated for business users. Login Enterprise's embedded dashboarding and insight capabilities make vast amounts of data actionable by providing a high-level overview and the option to drill down for further detail.

Login Enterprise's reporting includes a world map view for performance monitoring all your locations that provides a

summation of how your digital workspaces and monitored applications are performing. With insights and alerts, you can quickly detect issues like login failures, login delays, latency, or application failures. In addition to enhanced reporting features, provide SLA reports, trending views, historical analysis, application compatibility, and results in an easily digestible format for all business stakeholders.



Login Enterprise includes historic data analysis and easy drill downs to isolate underlying issues.

Broad Ecosystem Support

Today's operating environments are complex, and no two organizations' configurations look the same. But Login VSI has you covered—no need for many specialized solutions.

Login Enterprise supports pre-built customizations and integrations for the leading VDI, DaaS, and public cloud vendors, such as VMware, Citrix, Microsoft, and Nutanix. To ensure integration with your overall toolset, you can quickly expand integrations to applications of your choice by using a fully restful public API to control activities while sharing data and alerts.

Fast and Easy to Implement, Immediate Results

Login Enterprise Platform comes fully configured and ready to run within your environment, whether in the cloud or on-premises. No lengthy, time-intensive custom implementation or continuous refining is necessary. Instead, your deployment will include a fast and easy setup in evaluation, pre-production, and production environments.

Login Enterprise deployments are secure, providing the ability to control access and protect sensitive information. Adjusting your subscription as your business grows and changes over time is also easy. Start getting results and pull your team out of the endless configuration, tuning, updating, and troubleshooting business.

Ready to Begin Your Journey?

Learn more about how **Login Enterprise** can be your competitive advantage.

Ready to see more?

Request a **live demo** of the Login Enterprise Platform.

Get in touch with the Login VSI team.